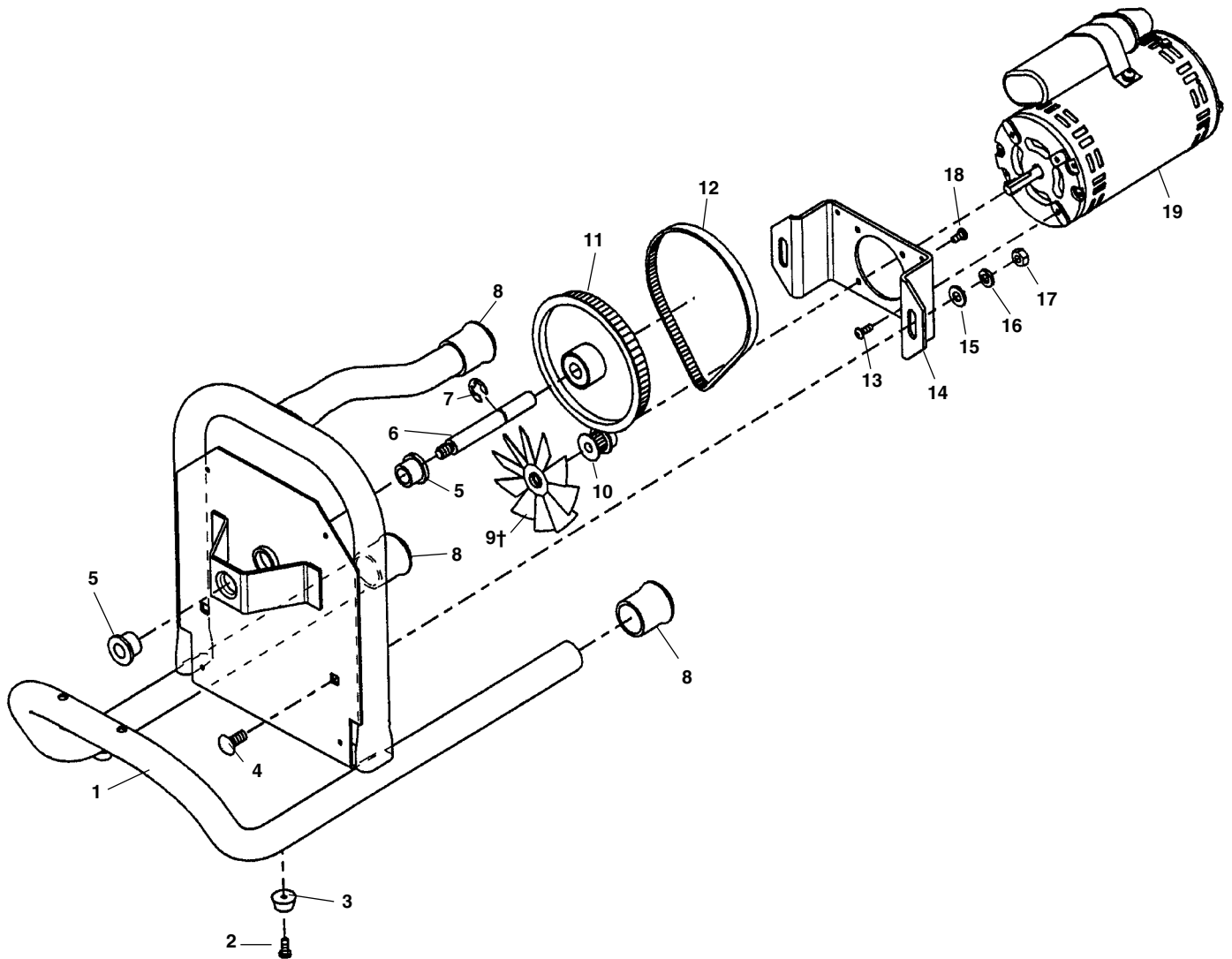


Motor/Frame Assembly

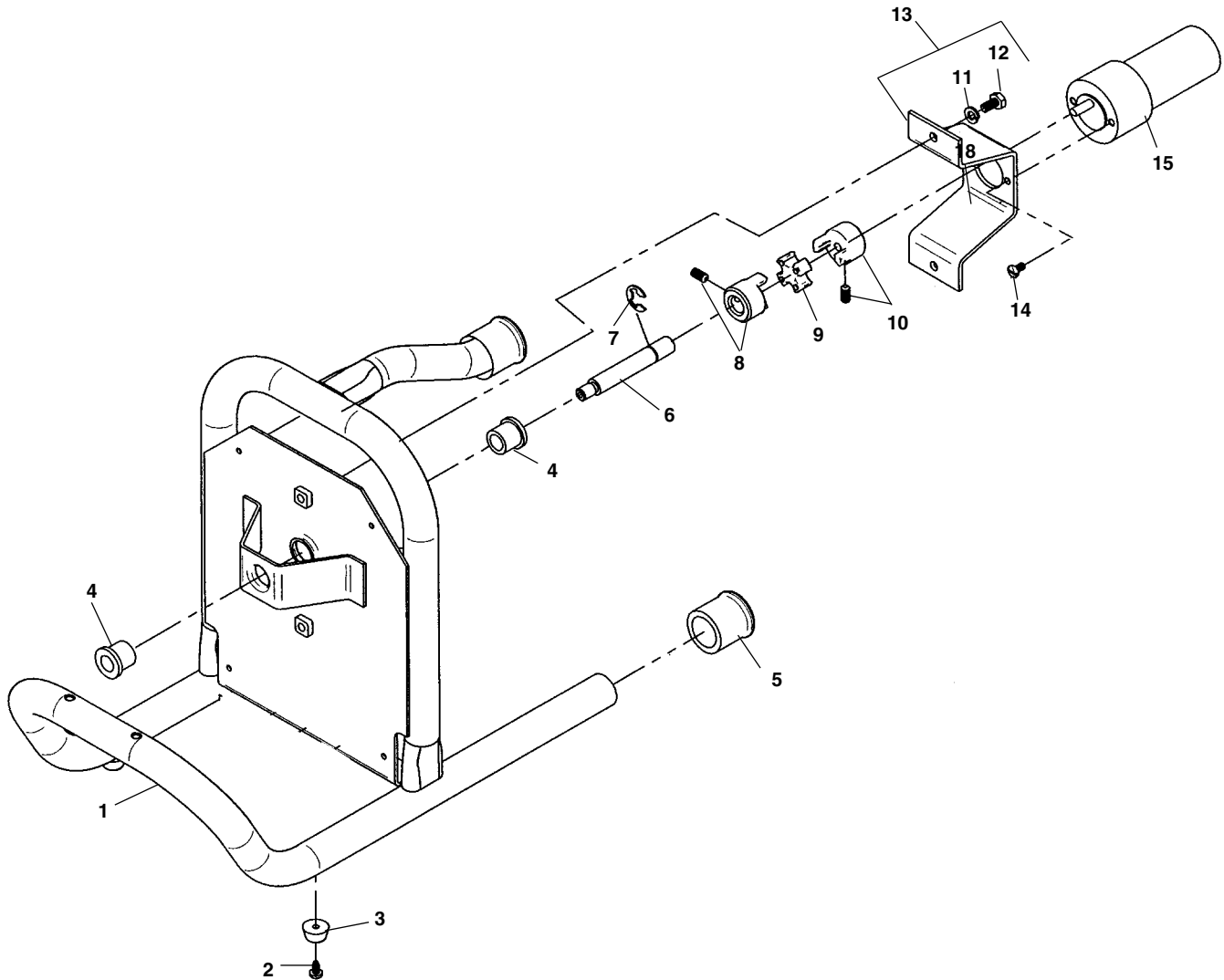


**NOTE: Order parts by Catalog Number only.
DO NOT order by Reference Number.**

Ref. No.	Catalog No.	Description	Ref. No.	Catalog No.	Description
1	71887	Frame Assembly	12	71957	Drive Belt
2	45420	Screw #10 - 24 (8)		83917	Drive Belt (230V 50Hz Only)
3	71972	Rubber Foot (2)	13	35217	Screw, Button Head #10 - 32 (4)
4	96260	Carriage Bolt $\frac{5}{16}$ " - 18 x $\frac{3}{4}$ "	14	71977	Motor Mounting Plate
5	71967	Flange Bearing (2)	15	60065	Flat Washer $\frac{5}{16}$ " (2)
6	71942	Drum Shaft	16	60080	Lock Washer $\frac{5}{16}$ " (2)
7	59810	Retaining Ring	17	60230	Hex Nut $\frac{5}{16}$ " - 18 (2)
8	37962	Rubber Tip (3)	18	45420	Screw #10 - 24 (8)
9†	73997	Fan	19	71982	Motor 115V 60Hz
10	71947	Motor Pulley		72017	Motor 230V 50Hz
11	71952	Main Pulley		72022	Motor 100V 50/60Hz
	83912	Main Pulley (230V 50Hz Only)			

† Refer to Service Notes for Fan position.

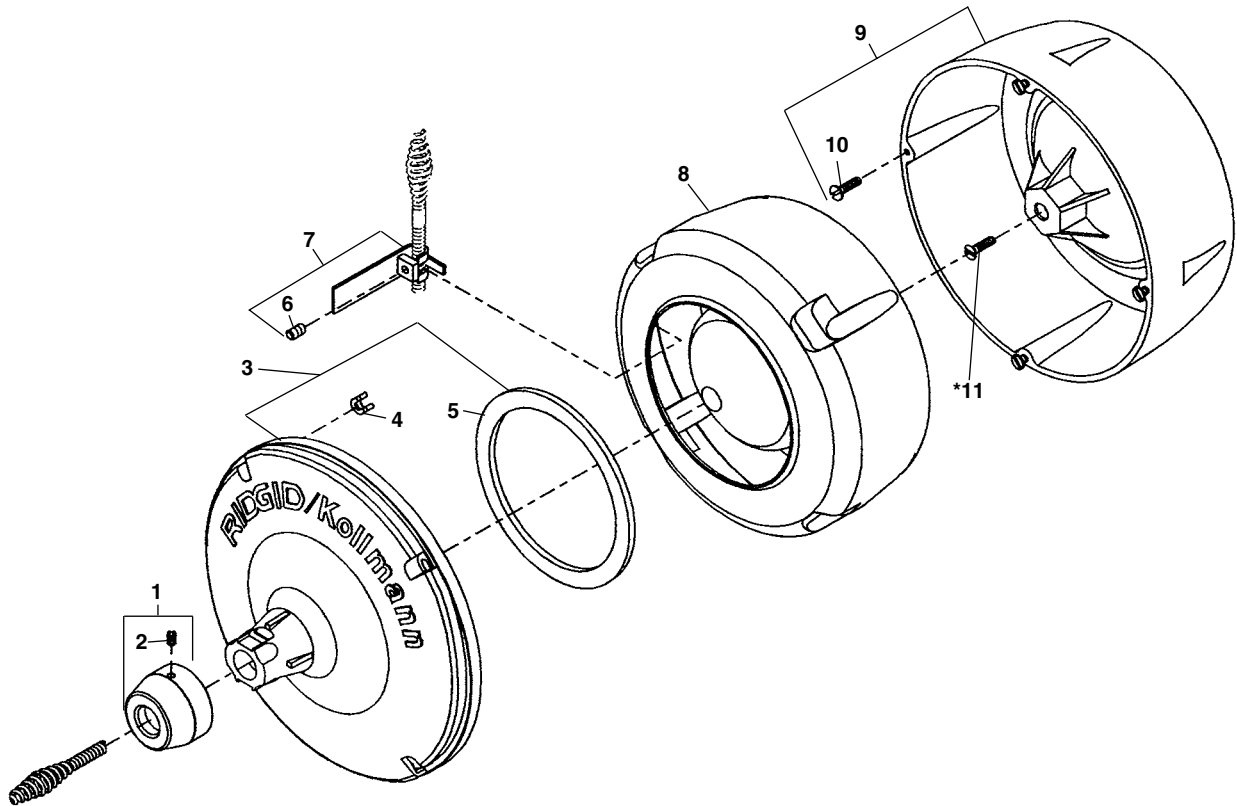
Motor/Frame Assembly



**NOTE: Order parts by Catalog Number only.
DO NOT order by Reference Number.**

Ref. No.	Catalog No.	Description
1	83357	K-40B Tubular Frame Assembly
2	45420	Screw #10 - 24 (8)
3	71972	Rubber Foot (2)
4	71967	Flange Bearing (2)
5	37962	Rubber Tip (3)
6	83367	Drum Shaft
7	59810	Retaining Ring
8	83377	Coupling End 1/2"
9	83382	Coupling Spider
10	83372	Coupling End 1/4"
11	60075	Washer (2)
12	60265	Hex Screw 1/4" - 20 x 1/2"
13	83402	Motor Mounting Plate (Inc. Ref. No. 11, 12)
14	35217	Screw, Button Head #10 - 32 (2)
15	83397	Motor 14.4V

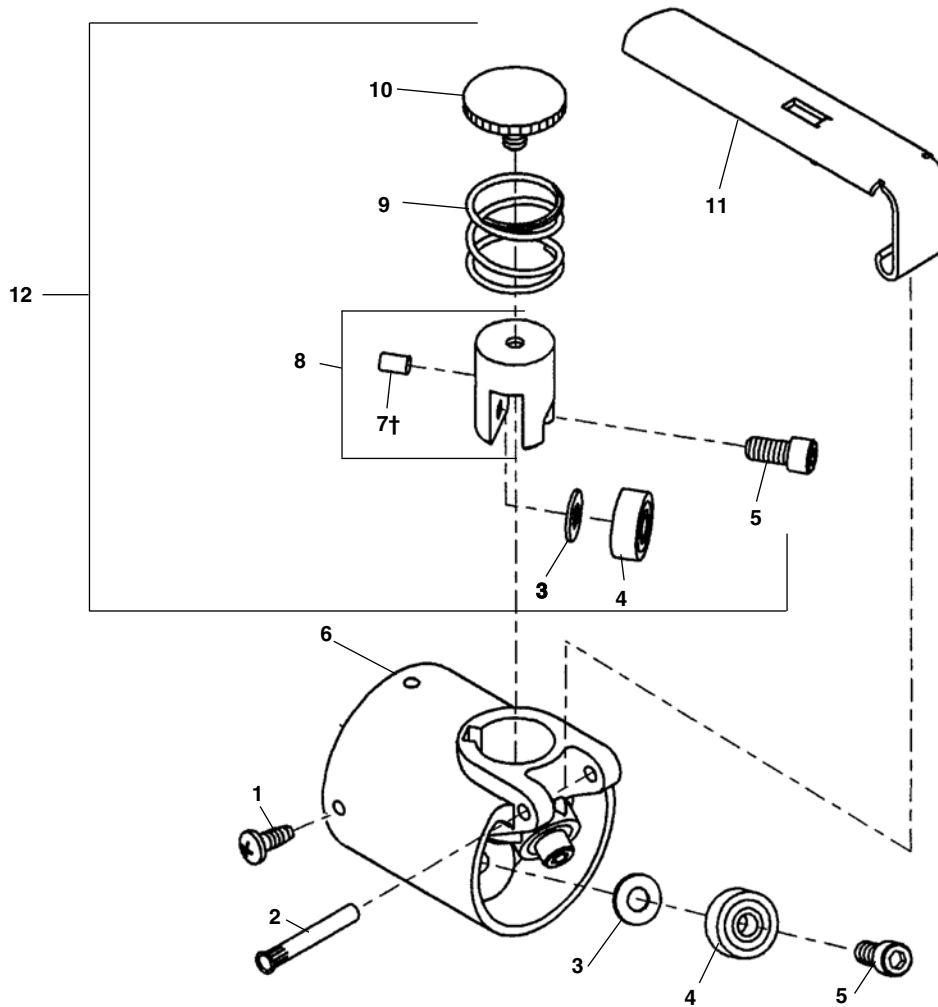
Drum Assembly



**NOTE: Order parts by Catalog Number only.
DO NOT order by Reference Number.**

Ref. No.	Catalog No.	Description
1	71837	Nose Piece
2	71882	Set Screw 1/4" - 20 x 1/2"
3	71842	Drum Front
4	68942	Clips (4)
5	47252	Gasket
6	71882	Set Screw
7	71847	Cable Torque Arm
8	68917	Drum Liner
9	68932	Drum Back
10	69542	Screw #10 - 32 x 1" (4)
*11	76775	Screw L.H. Thread

AUTOFEED® Assembly – Early Style



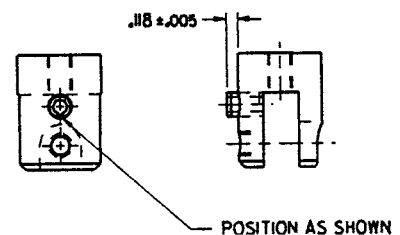
**NOTE: Order parts by Catalog Number only.
DO NOT order by Reference Number.**

Ref. No.	Catalog No.	Description	Ref. No.	Catalog No.	Description
—	67962	A-39PF AUTOFEED®	7†	54007	Roll Pin 1/4" x 3/8"
1	68937	Pan Head Screw #10-24 (4)	8	68017	Top Roller Holder
2	32107	Pivot Pin	9	68012	Return Spring
3	67992	Flat Thrust Washer (3)	10	68007	Top Adjustment Screw
4	67997	Roller Bearing (3)	11	68002	Feed Actuator Lever
5	39830	Socket Head Cap Screw (3)	12	76597	Top Roller Holder Assembly
6	67967	AUTOFEED® Body			

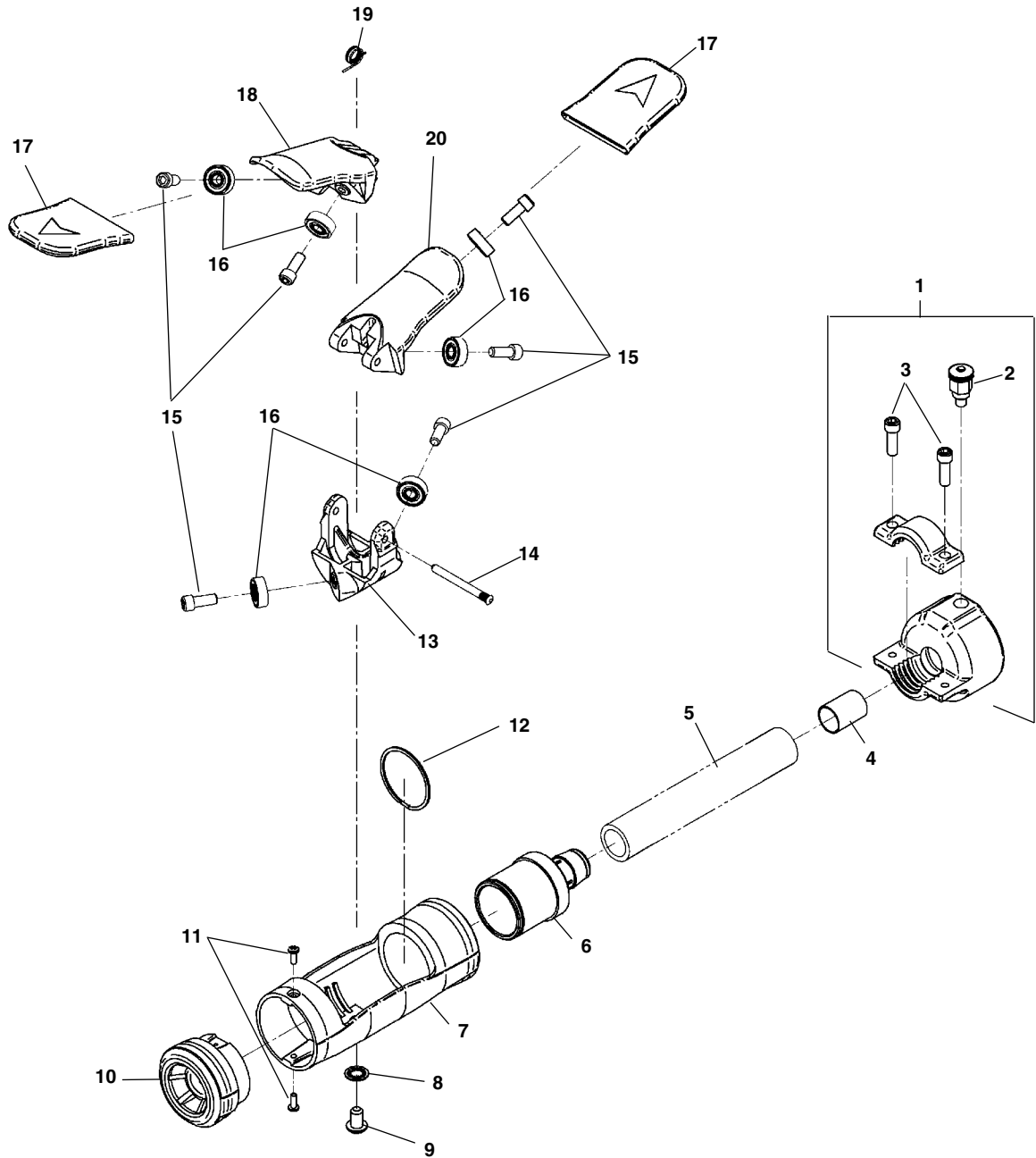
† – See Service Notes

Service Notes:

- Apply Texclad #2 grease to the following areas:
 - Top surface and threads of item #15 (Top Adjustment Screw)
 - Outside Dia. of item #13 (Top Roller Holder)
- Locate slot in Roll Pin item #12 at six-o'clock position and press to dimension shown



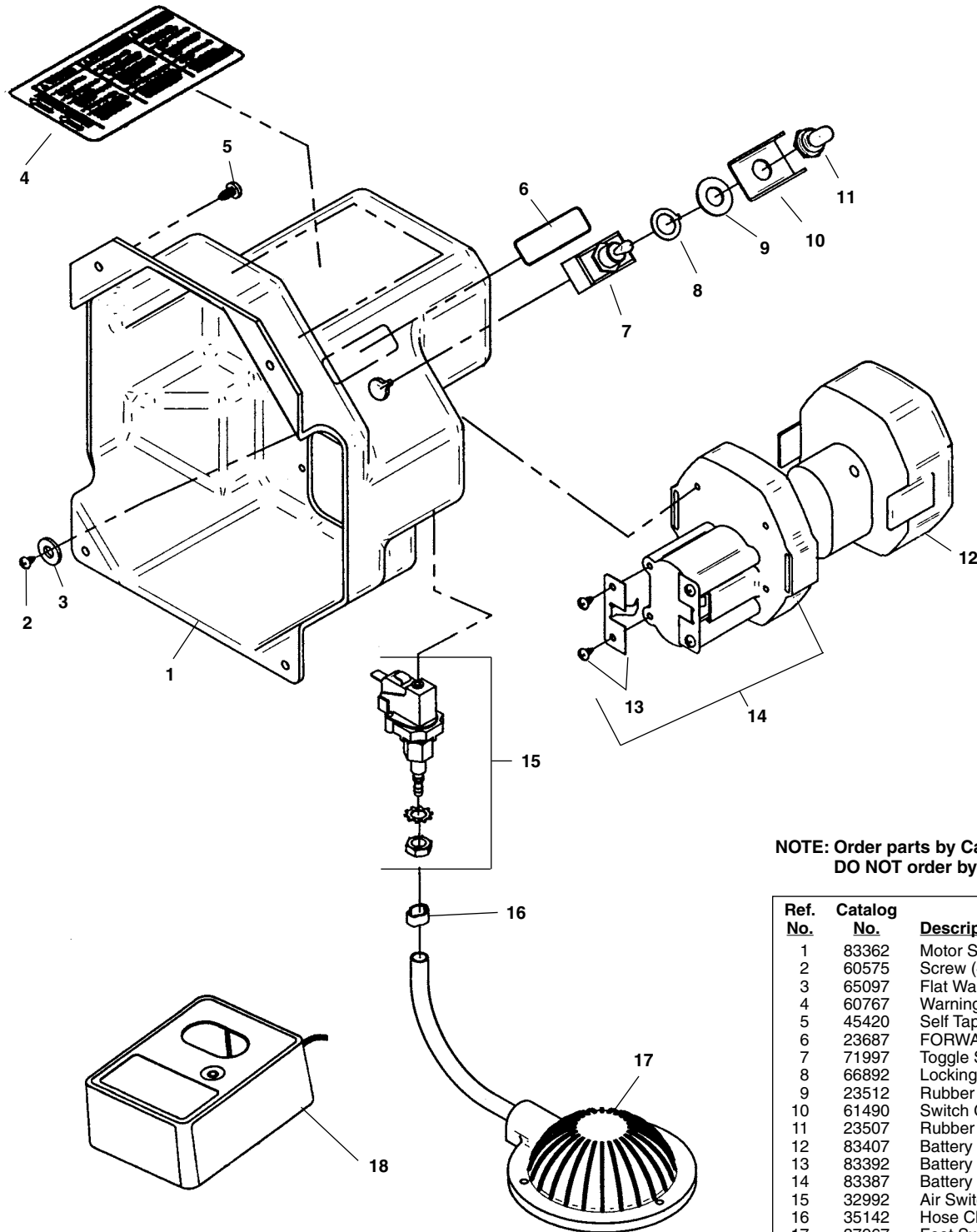
Guide Hose Assembly



**NOTE: Order parts by Catalog Number only.
DO NOT order by Reference Number.**

Ref. No.	Catalog No.	Description	Ref. No.	Catalog No.	Description
—	26558	Guide Hose Assembly with AUTOFEED	11	24168	Screw #6 (2)
1	59815	Guide Hose Bracket	12	41512	Spiral Ring
2	59510	Plunger Pin	13	24213	AUTOFEED Carriage
3	40910	Hex Cap Screw (2)	14	24208	Pivot Pin
4	31258	Ferrule	15	39830	Socket HD Cap Screw 1/4" - 20 x 5/8" (6)
5	72467	Hose, 4'	16	67997	Roller Bearing (6)
6	31238	AUTOFEED Adapter	17	31263	Lever Grip (2)
7	31243	Handgrip	18	24223	Forward Lever
8	31248	Lock Washer, 5/16" Internal	19	24228	Torsion Spring
9	24178	Button Screw 5/16" - 18	20	24218	Reverse Lever
10	24163	Nose Piece			

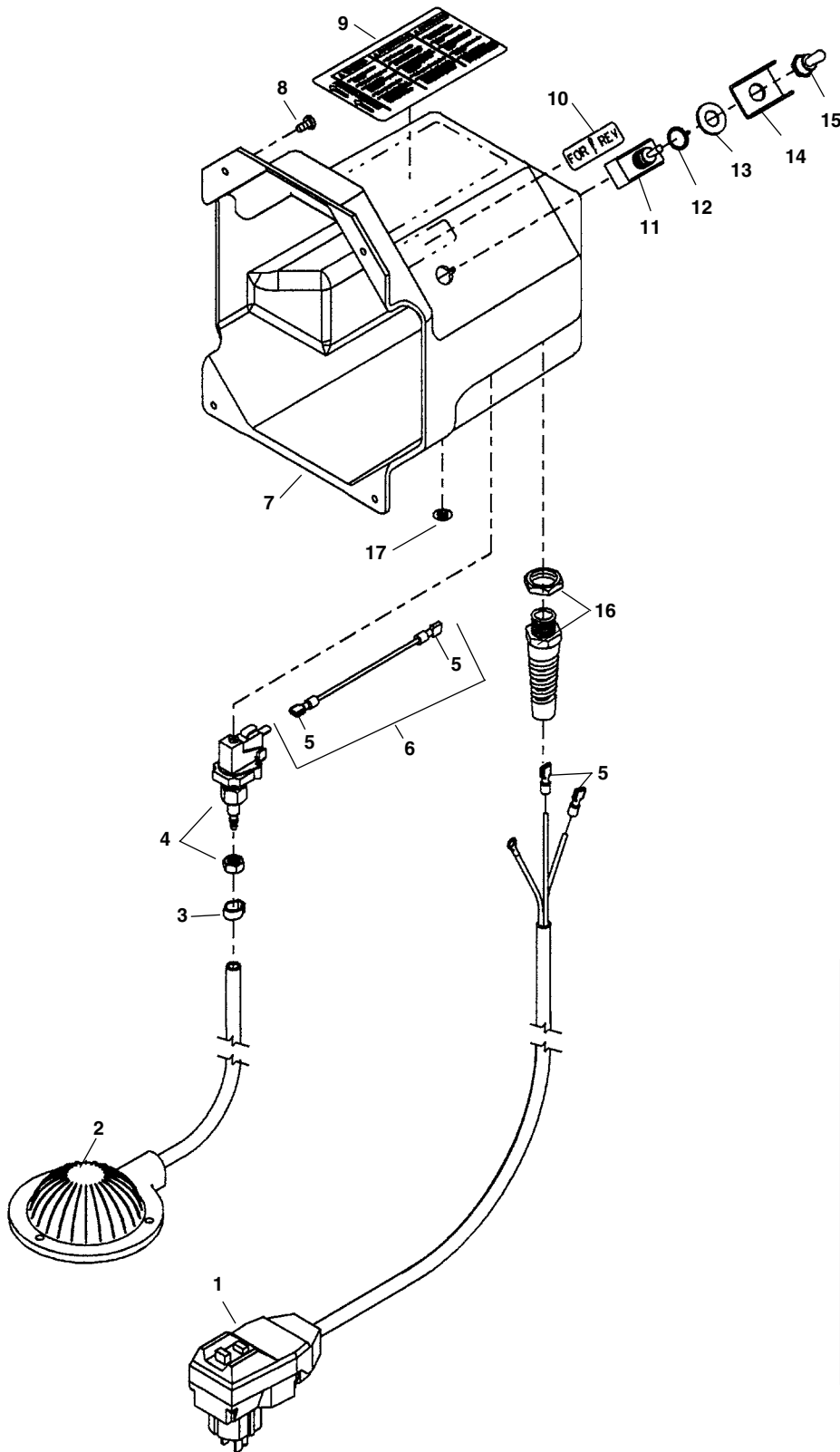
Electric Components



**NOTE: Order parts by Catalog Number only.
DO NOT order by Reference Number.**

Ref. No.	Catalog No.	Description
1	83362	Motor Shroud
2	60575	Screw (4)
3	65097	Flat Washer #6
4	60767	Warning Label
5	45420	Self Tapping Screw #10 - 24 (8)
6	23687	FORWARD/REVERSE Label
7	71997	Toggle Switch
8	66892	Locking Ring
9	23512	Rubber Washer
10	61490	Switch Guard
11	23507	Rubber Boot
12	83407	Battery 14.4V
13	83392	Battery Clips w/Screws
14	83387	Battery Socket Assembly
15	32992	Air Switch
16	35142	Hose Clamp
17	37967	Foot Switch Assembly
18	83417	Charger 115V
	84112	Charger 230V

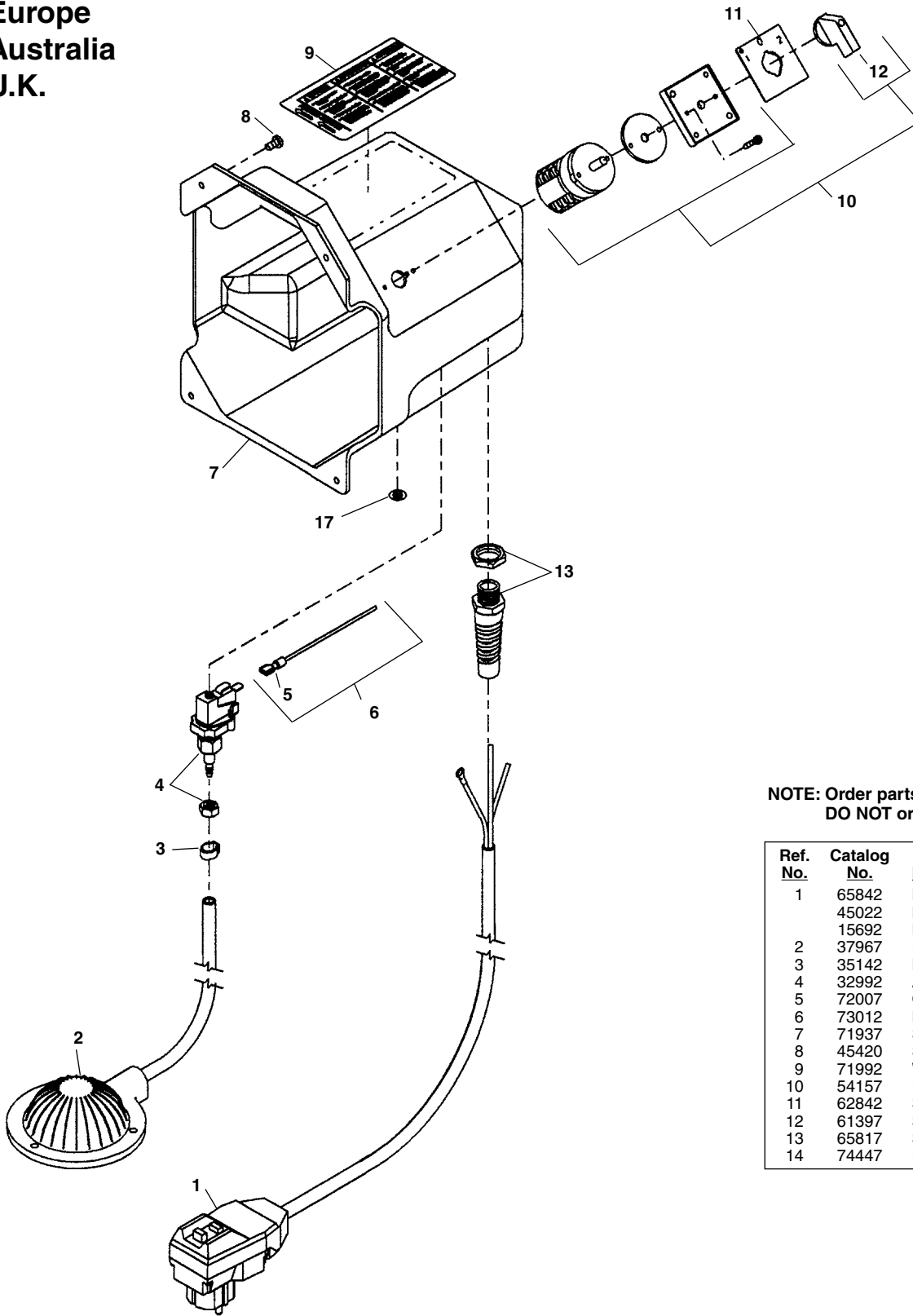
Electric Components



**NOTE: Order parts by Catalog Number only.
DO NOT order by Reference Number.**

Ref. No.	Catalog No.	Description
1	72002	Line Cord w/GFCI - 115V
	66882	Line Cord - 100V Japan
	15707	Line Cord - 230V Export
2	37967	Foot Switch Assembly
3	35142	Hose Clamp
4	32992	Air Switch
5	72007	Quick Disconnect (4)
6	73012	Lead Wire
7	71937	Shroud
8	45420	Self Tapping Screw #10 - 24 (8)
9	71992	Warning Label
10	23687	FORWARD/REVERSE Label
11	71997	Toggle Switch
12	66892	Locking Ring
13	23512	Rubber Washer
14	61490	Switch Guard
15	23507	Rubber Boot
16	65817	Strain Relief
17	74447	Plug

Electrical Components
Europe
Australia
U.K.

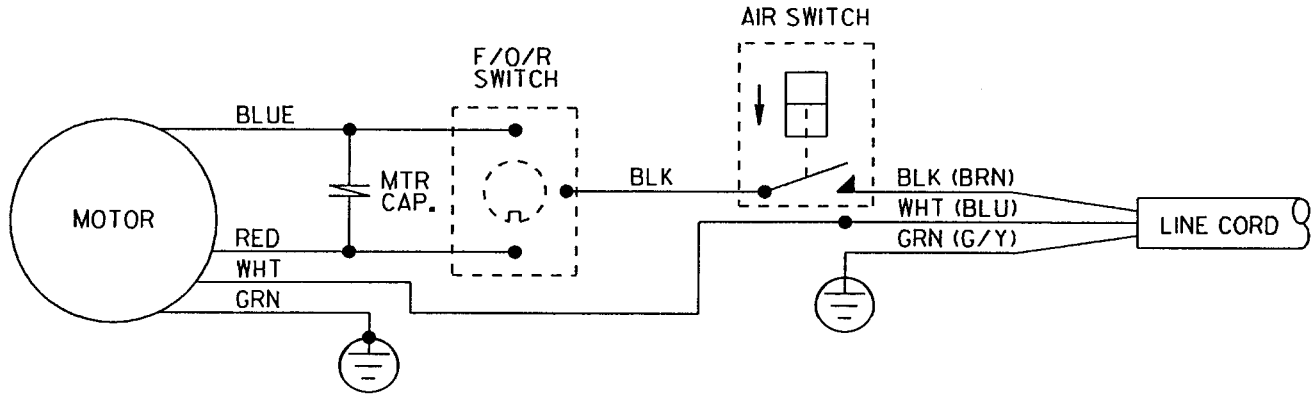


**NOTE: Order parts by Catalog Number only.
 DO NOT order by Reference Number.**

Ref. No.	Catalog No.	Description
1	65842	Line Cord w/GFCI-220V Europe
	45022	Line Cord w/Plug 110V U.K.
	15692	Line Cord w/Plug 240V Australia
2	37967	Foot Switch Assembly
3	35142	Hose Clamp
4	32992	Air Switch
5	72007	Quick Disconnect
6	73012	Lead Wire
7	71937	Shroud
8	45420	Self Tapping Screw #10 - 24 (8)
9	71992	Warning Label
10	54157	Rotary Switch
11	62842	Switch Plate
12	61397	Switch Knob
13	65817	Strain Relief
14	74447	Plug

K-40 Wiring

MOTOR WIRING DIAGRAM
 115V/60Hz
 230V/50Hz EXPORT
 100V/50-60Hz JAPAN



MOTOR WIRING DIAGRAM
 230V/50Hz EUROPE
 240V/50Hz AUSTRALIA

